



an INFINIT® brand



# 18x16x10 Polycarbonate Weatherproof Outdoor IP66 NEMA 4X Enclosure, 240VAC Universal Outlet Mount Plate Mechanical Thermostat Heat Dark Gray

## NEMA Enclosures Technical Data Sheet

NBPC181610-EH0

### Features

- High-Impact, UV Resistant Polycarbonate (Dark Gray)
- Stainless steel latches with padlock eye
- NEMA Type 4X / IP66\* rated (includes (4x) optional lid corner screws\*\*)
- Fully gasketed lid & user installed wall mounting brackets
- Features aluminum mounting plate with universal duplex socket for 240 VAC power & thermostat controlled heating system

### Applications

- Remote Wireless LAN WiFi equipment installations
- Indoor and outdoor installations
- Rapid Deployment Installations
- Corrosive environments & hotspot applications
- Protection of equipment from theft or damage

### Description

The box is a rugged weatherproof enclosure that is ideal for both indoor and outdoor applications. Constructed from High-Impact, UV Resistant Polycarbonate material that provides superior durability to impacts and ease of modification while maintaining minimum weight. It is well suited for high temperature or corrosive environments. The included wall mount brackets come uninstalled and bagged with their hardware inside of the enclosure. Once the brackets are installed the enclosure can be mounted directly to any flat wall surface provided proper screws are used into secure studs. The brackets, once installed, also allow you to use our HGX-PMT pole mount kits. The lid features a non-metallic hinge system that allows for quick removal & can be reattached just as quickly without the need for any tools. The enclosure comes with a pair of stainless-steel latches with padlock eyes allowing you to secure the enclosure from tampering. The enclosure comes in a Dark Gray (Pantone 422C)

#### Mounting Plate

The aluminum mounting plate included with the NBPC181610-EH0 features a duplex 240 VAC Universal Euro outlet (contained in one duplex socket) and a terminal block for easy hook up to externally provided line power. The enclosure also features holes for two N-Bulkhead lightning protectors or connectors, a grounding lug and cable conduit connector.

#### Heating

To help ensure trouble-free operation of electronic equipment, proper operating temperatures inside an enclosure need to be controlled. With the built-in heaters internal temperatures can be better maintained. This model is ideal in cold environments.

For heating the NBPC181610-EH0 includes two thermostat-controlled 200W (400W total) heaters. Each 200W heater is controlled by its own thermostat. The heaters turn on when the internal temperature drops to 40° F (4° C) ±7° and turn off at 60° F (15° C) ±5°. The heaters do not require the use of any of the AC outlets, leaving them all available for your equipment. No extra room for the heaters is required since they are mounted underneath the plate.

The HGX-PMT series of pole mounting kits allow the populated enclosure to be securely mounted to a variety of different size poles.

Compatible versions include HGX-PMT13, HGX-PMT16, HGX-PMT28, HGX-PMT29, HGX-PMT30 & HGX-PMT33

\*Note: Enclosure ports (Cable conduit connector and N-type holes for lightning protectors or connectors) must be properly sealed to maintain NEMA Type 4X / IP66 rating

\*\*Note: If all four of the optional lid screws are installed the enclosure can achieve. NEMA 6P / IP68 however all of the openings would have to be properly sealed with an IP68 rated plug, gland or coupler.

#### Size

Outer Height	18.9 in	[480.06 mm]
Outer Width	16.8 in	[426.72 mm]
Outer Depth	11.3 in	[287.02 mm]

Click the following link (or enter part number in "SEARCH" on website) to obtain additional part information including price, inventory and certifications: [18x16x10 Polycarbonate Weatherproof Outdoor IP66 NEMA 4X Enclosure, 240VAC Universal Outlet Mount Plate Mechanical Thermostat Heat Dark Gray NBPC181610-EH0](#)



an INFINIT<sup>e</sup> brand

18x16x10 Polycarbonate Weatherproof Outdoor  
IP66 NEMA 4X Enclosure, 240VAC Universal Outlet  
Mount Plate Mechanical Thermostat Heat Dark Gray



## NEMA Enclosures Technical Data Sheet

NBPC181610-EH0

Inner Height	18.2 in	[462.28 mm]
Inner Width	16.2 in	[411.48 mm]
Inner Depth	9.7 in	[246.38 mm]
Weight	18.5 lbs	[8.39 kg]
Enclosure Material	Polycarbonate	

### Environmental Specifications

Temperature Rating	-40° to 265° F [-40° to 129° C]
NEMA Rating	4X
Ingress Protection (IP) Rating	IP66

### Compliance Certifications

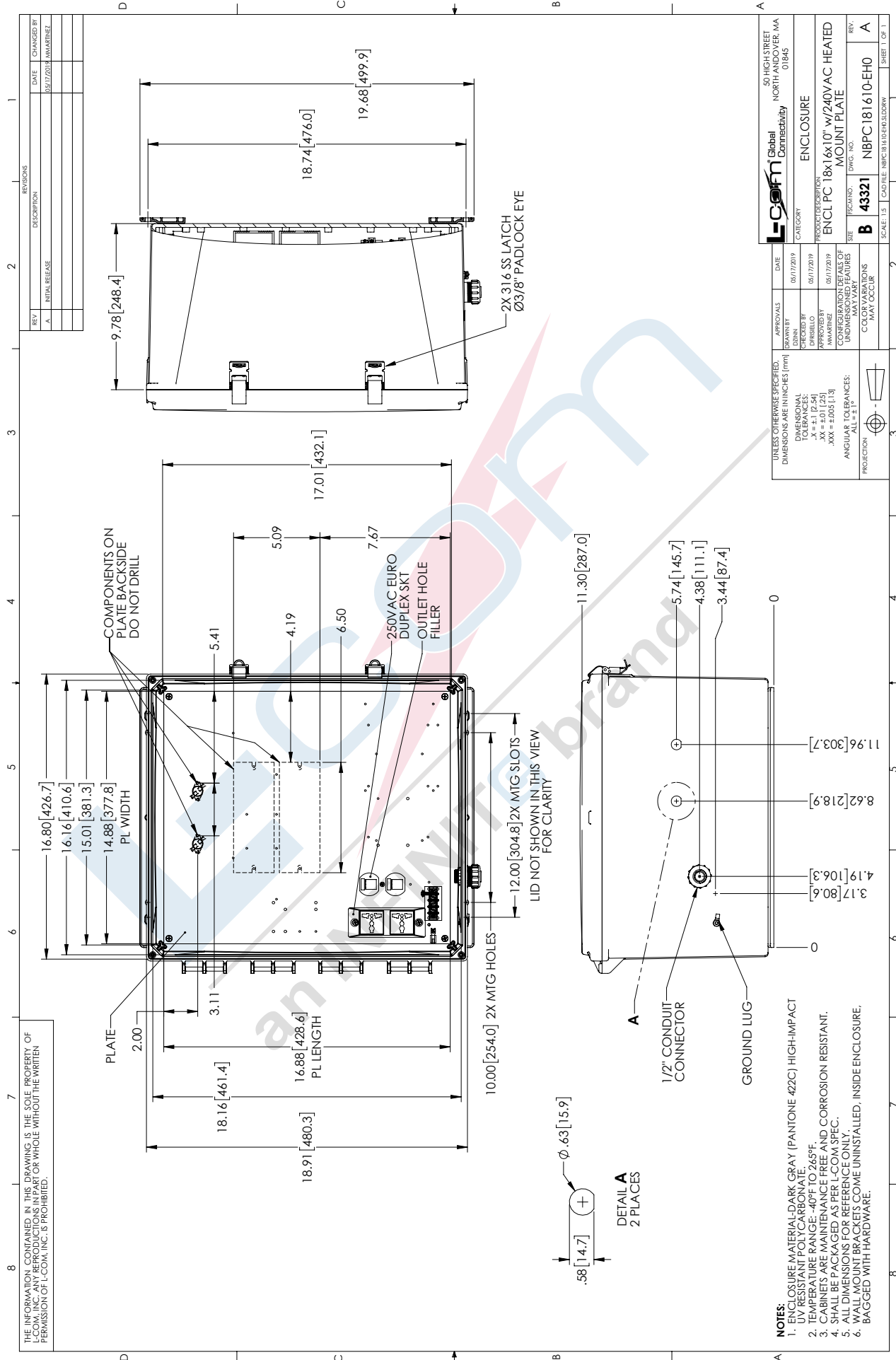
UL Listed	No
-----------	----

Click the following link (or enter part number in "SEARCH" on website) to obtain additional part information including price, inventory and certifications: [18x16x10 Polycarbonate Weatherproof Outdoor IP66 NEMA 4X Enclosure, 240VAC Universal Outlet Mount Plate Mechanical Thermostat Heat Dark Gray NBPC181610-EH0](#)

URL: <https://www.l-com.com/nema-enclosures-18x16x10-polycarb-weatherproof-nema-4x-encl-240vac-univ-outlet-mnt-plate-mech-therm-heat-dark-gray-p.aspx>

# NBPC181610-EH0 CAD Drawing

18x16x10 Polycarbonate Weatherproof Outdoor IP66 NEMA 4X Enclosure,  
240VAC Universal Outlet Mount Plate Mechanical Thermostat Heat Dark Gray



REVISIONS		
REV	DESCRIPTION	DATE
A	INITIAL RELEASE	05/17/2019

APPROVALS	DATE	50 HIGH STREET NORTH ANDOVER, MA 01845
DRAWN BY L. SHERBLO	05/17/2019	ENCLOSURE
APPROVED BY J. WAMARINEZ	05/17/2019	
UNLESS OTHERWISE SPECIFIED, DIMENSIONS ARE IN INCHES (MM)		
DIMENSIONAL TOLERANCES:		
.XX = ±0.1 (.25)		
.XXX = ±0.05 (.13)		
ANGULAR TOLERANCES: ALL = ±1°		
PROJECTION:		
PRODUCT DESCRIPTION	ENCLOSURE	
SIZE	ENCLOSURE	
DWG. NO.	B 43321	
REV.	NBPC181610-EH0	A

THE INFORMATION CONTAINED IN THIS DRAWING IS THE SOLE PROPERTY OF L-COM, INC. ANY REPRODUCTIONS IN PART OR WHOLE WITHOUT THE WRITTEN PERMISSION OF L-COM, INC. IS PROHIBITED.

- NOTES:**
- ENCLOSURE MATERIAL DARK GRAY (PANTONE 422C) HIGH-IMPACT UV RESISTANT POLYCARBONATE
  - TEMPERATURE RANGE: -40°F TO 245°F
  - CABINETS ARE MAINTENANCE FREE AND CORROSION RESISTANT.
  - SHALL BE PACKAGED AS PER L-COM SPEC.
  - ALL DIMENSIONS FOR REFERENCE ONLY.
  - WALL MOUNT BRACKETS COME UNINSTALLED, INSIDE ENCLOSURE, BAGGED WITH HARDWARE.