



2 Watt RF Load with Chain Up to 6 GHz with SMA Male Nickel Plated Brass Body

RF Terminations Technical Data Sheet

LCTR1003C

Features

- SMA connector interface
- DC to 6 GHz Frequency Range
- Max Power 2 Watt (CW)
- VSWR < 1.2:1

Applications

- Instrumentation
- RF test systems
- Prototyping and characterization
- Production systems
- Precision measurements

Description

L-com's LCTR1003C is an RF termination (also called RF load or dummy load) that operates from DC to 6 GHz and handles up to 2 Watt (CW). This SMA termination / load has a male gender and chain. LCTR1003C termination offers 1.2:1 max VSWR.

RF loads/terminations are indispensable components in many RF, microwave and millimeter wave systems where signal reflection from unused ports can potentially damage the device or reduce the signal integrity. By using a terminator on an unused port with a matched load (dummy load), the incident energy will be absorbed with minimal reflection. These termination components are commonly used to terminate devices such as couplers, circulators, and switches. They are also widely used in measurement systems to ensure accurate results.

Electrical Specifications

Description	Minimum	Typical	Maximum	Units
Frequency Range	DC		6	GHz
Impedance		50		Ohms
VSWR			1.2:1	
Input Power (CW)			2	Watts
Input Power (Peak) 5μs pulse with 0.4% duty cycle			250	Watts

Mechanical Specifications

Size

Length	0.629 in [15.98 mm]
Width	0.354 in [8.99 mm]
Weight	0.01212 lbs [5.5 g]

Configuration

Connector	SMA Male
Hex Size	16-May inch

Material Specifications

Description	Material	Plating
Connector 1 Contact	Brass	Gold
Body	Brass	Nickel
Coupling Nut	Brass	Nickel



2 Watt RF Load with Chain Up to 6 GHz with SMA Male Nickel Plated Brass Body

RF Terminations Technical Data Sheet

LCTR1003C

Housing	Brass	Nickel
---------	-------	--------

Environmental Specifications

Temperature

Operating Range

-55 to 125 deg C

Compliance Certifications

Plotted and Other Data

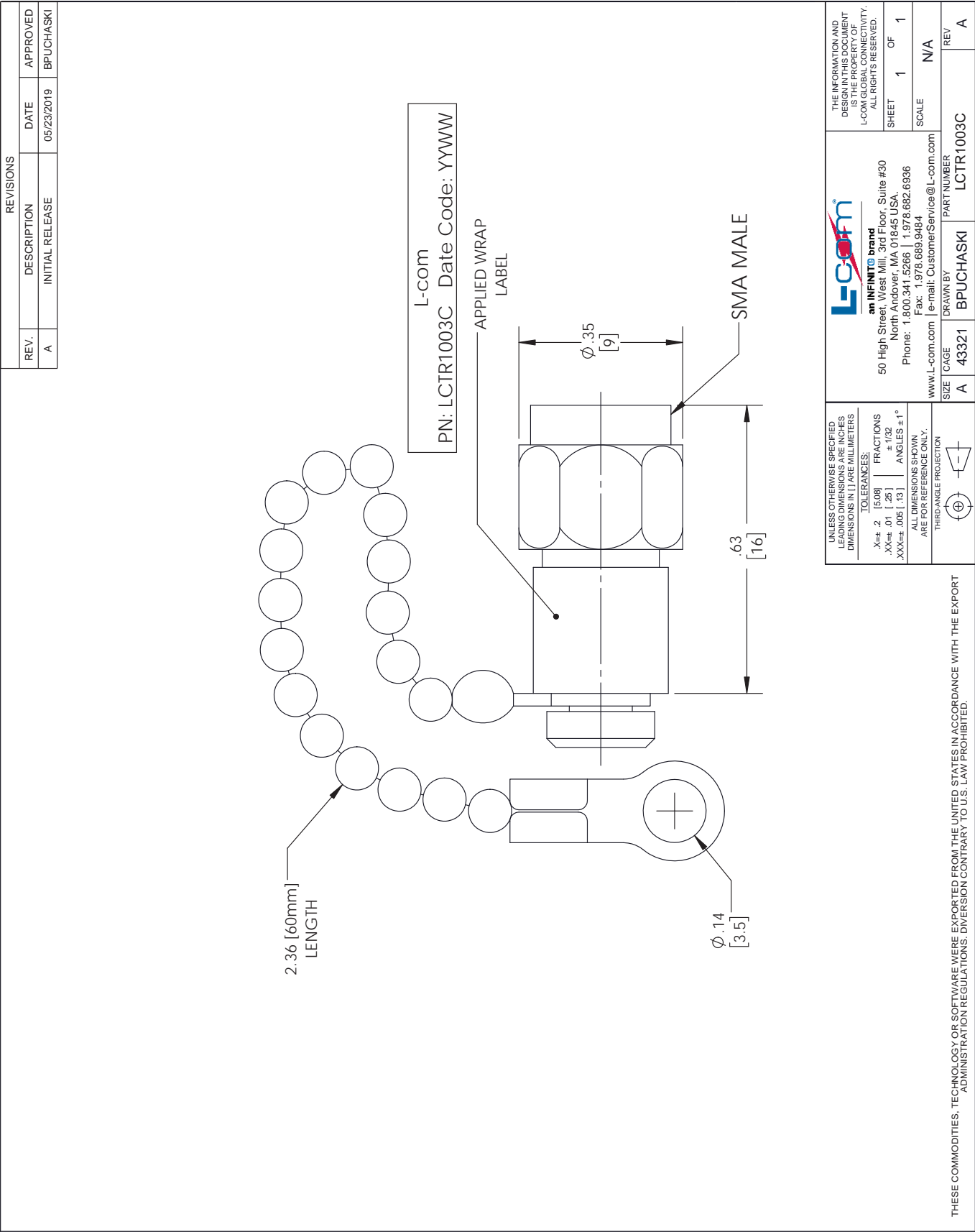
Notes:

Our portfolio includes coaxial cable assemblies, connectors, adapters and custom products as well as lightning and surge protectors, NEMA rated enclosures, and an RF product line which includes antennas, amplifiers, passive, and active components.

The information contained in this document is accurate to the best of our knowledge and representative of the part described herein. It may be necessary to make modifications to the part and/or the documentation of the part, in order to implement improvements. L-com reserves the right to make such changes as required. Unless otherwise stated, all specifications are nominal. L-com does not make any representation or warranty regarding the suitability of the part described herein for any particular purpose, and L-com does not assume any liability arising out of the use of any part or documentation.

LCTR1003C CAD Drawing

2 Watt RF Load with Chain Up to 6 GHz with SMA Male Nickel Plated Brass Body



T-Rev.B