

6

5

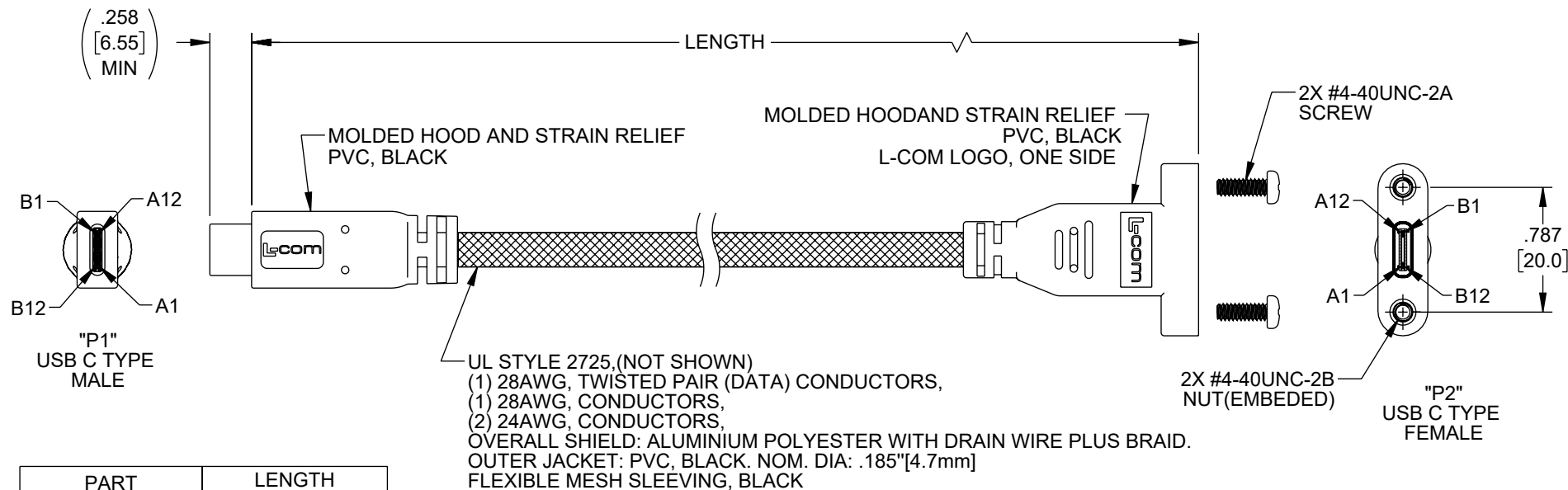
4

3

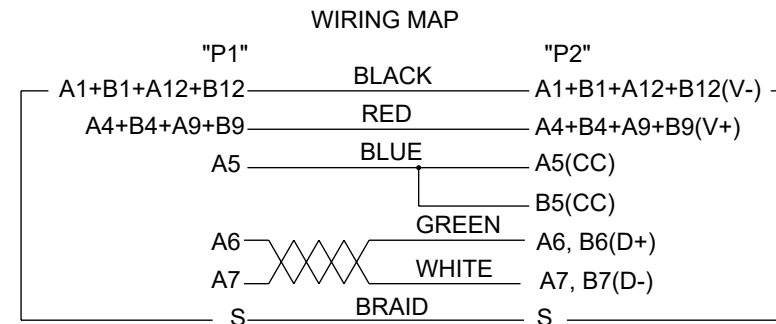
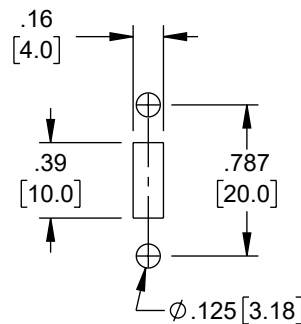
2

1

REVISION					
ZONE	REV	DESCRIPTION	DATE	CHANGED BY	APPROVED
	D	ECO-13923	10/10/2024	KDANG	DUSTING



PART NUMBER	LENGTH	
	METERS	FEET
U3A00057-03M	0.3	0.98
U3A00057-05M	0.5	1.64
U3A00057-1M	1.0	3.28
U3A00057-2M	2.0	6.56
U3A00057-3M	3.0	9.84



NOTES:

- CABLE ASSEMBLY SHALL BE TESTED FOR CONTINUITY.
VOLTAGE TEST: DC 300V 10ms;
INSULATION RESISTANCE: 10.0M OHM/MIN;
CONDUCTANCE RESISTANCE: 5.0 OHM/MAX.
- COMPONENT SHALL BE INDIVIDUALLY PACKAGED IN ACCORDANCE WITH L-COM SPECIFICATION LSP-010.

REGULATORY COMPLIANCE:
EU RoHS DIRECTIVE (MOST RECENT RELEASED VERSION)

RECOMMENDED
PANEL CUTOUT

<div>UNLESS OTHERWISE SPECIFIED LEADING DIMENSIONS ARE INCHES DIMENSIONS IN [] ARE MILLIMETERS</div> <div>TOLERANCES:</div> <div><div>X = ±.2 [5] .XX = ±.02 [0.5] .XXX = ±.005 [0.13]</div><div>FRACTIONS ± 1/32 ANGLES ± 1°</div></div>		<div><div>L-com® an INFINIT® brand</div><div>Website: www.L-com.com Phone: 1.800.341.5266 1.978.682.6936</div></div> <div><div><div><div><div></div></div><div></div></div><div><div></div></div><div></div></div></div> <div>INTERPRET ALL DIMENSIONS AND TOLERANCES PER ASME Y14.5</div> <div><div>SCALE NONE</div><div>SHEET 1 OF 1</div></div>	
<div>CABLE LENGTH TOLERANCES:</div> <div><div>≤12 [305] = +1 [25] / -0 >12 [305] ≤ 60 [1524] = +2 [51] / -0 >60 [1524] ≤ 120 [3048] = +4 [102] / -0 >120 [3048] ≤ 300 [7620] = +6 [152] / -0 >300 [7620] = +5% / -0</div></div> <div>ALL DIMENSIONS ARE FOR REFERENCE ONLY AND SUBJECT TO CHANGE WITHOUT NOTICE UN-DIMENSIONED/NON-CRITICAL FEATURES MAY VARY IN SIZE AND LOCATION COLORS MAY VARY</div>		<div>DESCRIPTION</div> <div>CA USB-C PNL/USB-CM</div>	
<div>SIZE A</div>	<div>CAGE CODE 43321</div>	<div>DRAWN BY JYOU</div>	<div>ITEM NO. U3A00057</div>

THE INFORMATION CONTAINED IN THIS DRAWING IS THE SOLE PROPERTY OF INFINITE ELECTRONICS, INC. ANY REPRODUCTION IN PART OR WHOLE WITHOUT THE WRITTEN PERMISSION OF INFINITE ELECTRONICS, INC. IS PROHIBITED. THESE COMMODITIES, TECHNOLOGY OR SOFTWARE WERE EXPORTED FROM THE UNITED STATES IN ACCORDANCE WITH THE EXPORT ADMINISTRATION REGULATIONS. DIVERSION CONTRARY TO U.S. LAW PROHIBITED.

6

5

4

3

2

1