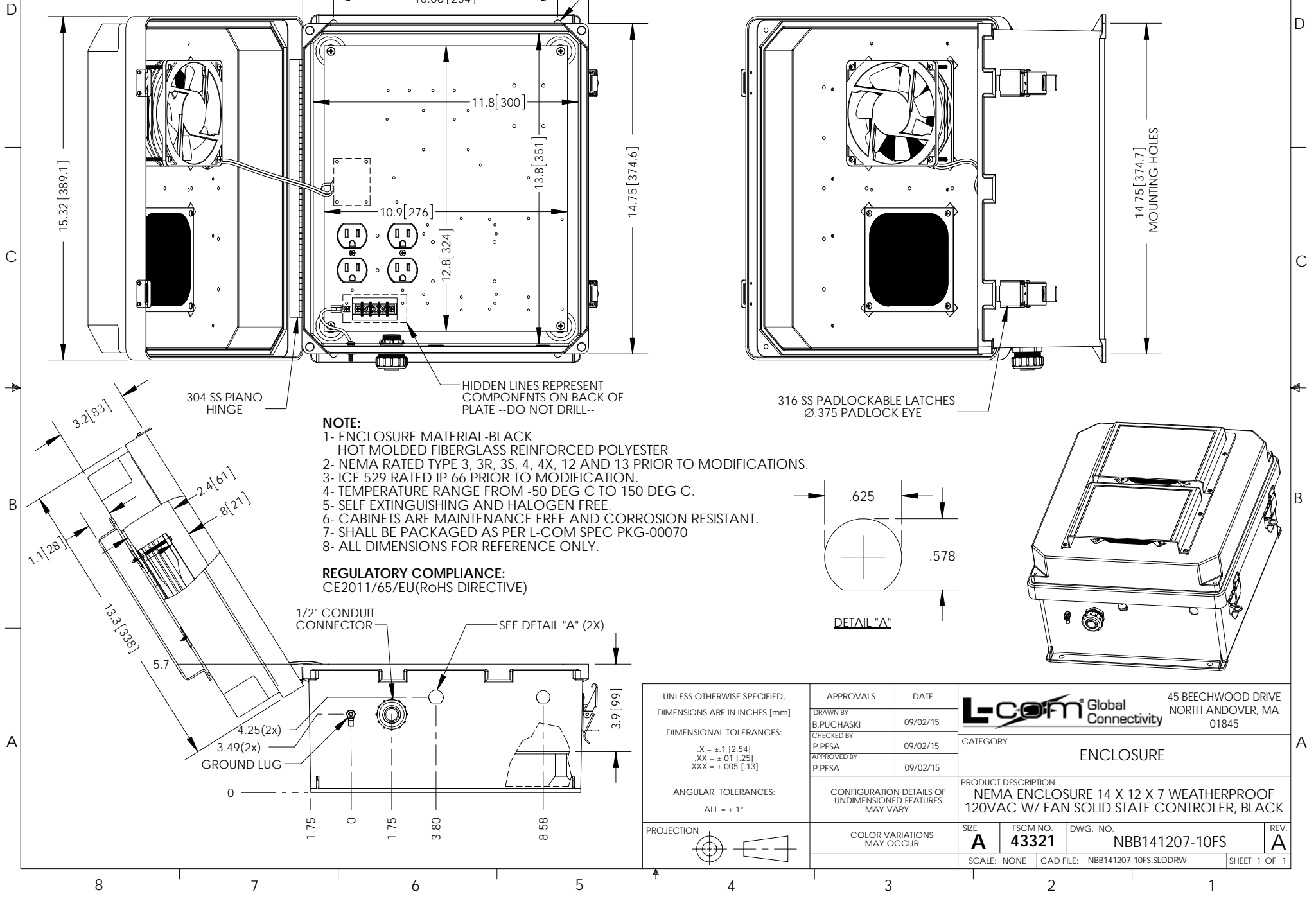


THE INFORMATION CONTAINED IN THIS DRAWING IS THE SOLE PROPERTY OF L-COM, INC.. ANY REPRODUCTION IN PART OR WHOLE WITHOUT THE WRITTEN PERMISSION OF L-COM, INC. IS PROHIBITED.

| REVISIONS |                 |         |           |
|-----------|-----------------|---------|-----------|
| REV       | DESCRIPTION     | DATE    | APPROVED  |
| A         | INITIAL RELEASE | 9/22/15 | D.GRIFFIN |
|           |                 |         |           |
|           |                 |         |           |



|  |                                   |                                 |   |
|--|-----------------------------------|---------------------------------|---|
| UNLESS OTHERWISE SPECIFIED, DIMENSIONS ARE IN INCHES [mm]<br><br>DIMENSIONAL TOLERANCES:<br>.X = ±.1 [2.54]<br>.XX = ±.01 [.25]<br>.XXX = ±.005 [.13]<br><br>ANGULAR TOLERANCES:<br>ALL = ± 1°<br><br>PROJECTION | APPROVALS                         | DATE                            | <b>L-com</b> Global Connectivity<br>45 BEECHWOOD DRIVE<br>NORTH ANDOVER, MA<br>01845                          |
|  | DRAWN BY<br>B.PUCHASKI            | 09/02/15                        |   |
|  | CHECKED BY<br>P.PESA              | 09/02/15                        |   |
|  | APPROVED BY<br>P.PESA             | 09/02/15                        |   |
| CONFIGURATION DETAILS OF UNDIMENSIONED FEATURES MAY VARY<br><br>COLOR VARIATIONS MAY OCCUR   | CATEGORY<br><br>ENCLOSURE         |                                 | PRODUCT DESCRIPTION<br>NEMA ENCLOSURE 14 X 12 X 7 WEATHERPROOF<br>120VAC W/ FAN SOLID STATE CONTROLLER, BLACK |
|  | SIZE<br><b>A</b>                  | FSCM NO.<br><b>43321</b>        |   |
|  | DWG. NO.<br><b>NBB141207-10FS</b> | REV.<br><b>A</b>                |   |
| SCALE: NONE  |                                   | CAD FILE: NBB141207-10FS.SLDDRW | SHEET 1 OF 1  |