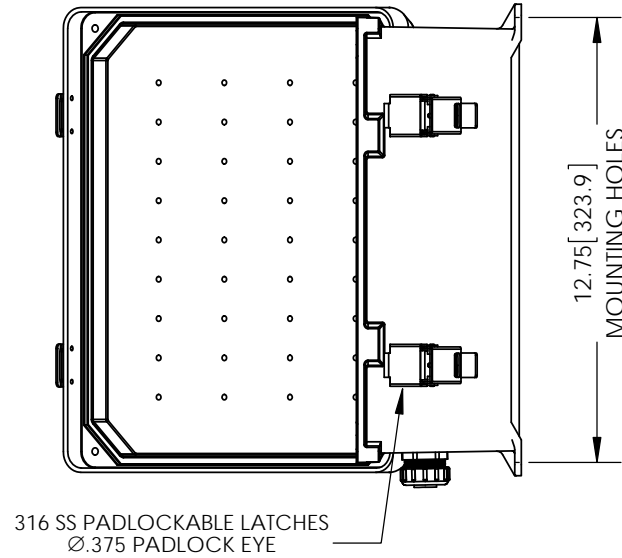
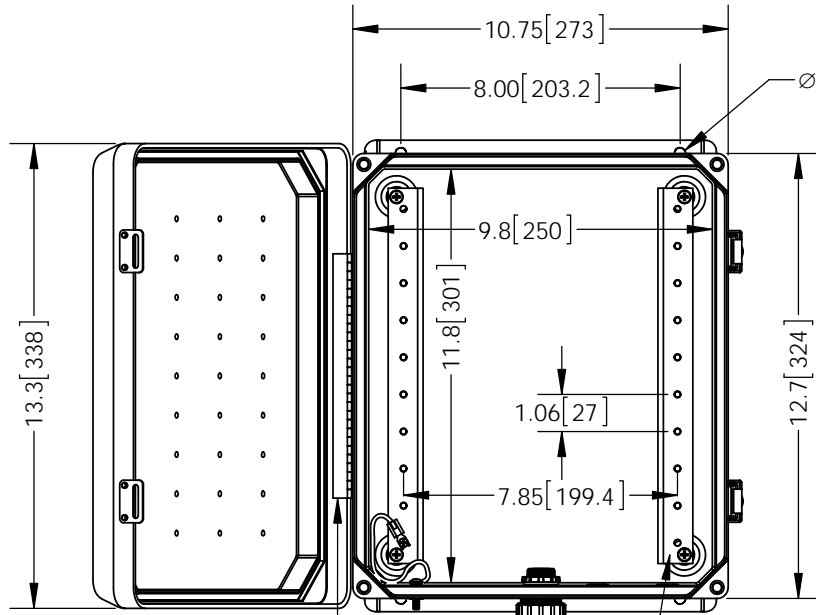


THE INFORMATION CONTAINED IN THIS DRAWING IS THE SOLE PROPERTY OF L-COM, INC. ANY REPRODUCTION IN PART OR WHOLE WITHOUT THE WRITTEN PERMISSION OF L-COM, INC. IS PROHIBITED.

REVISIONS			
REV	DESCRIPTION	DATE	APPROVED
A	INITIAL RELEASE	01/30/14	B.PUCHASKI
-	-	-	-
-	-	-	-

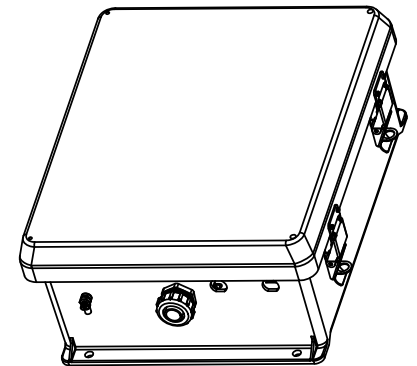
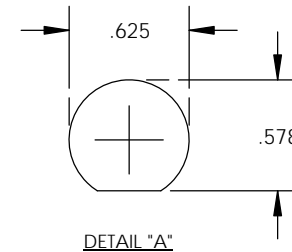
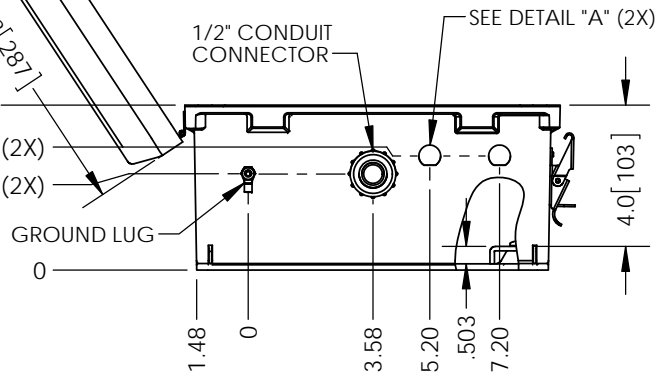
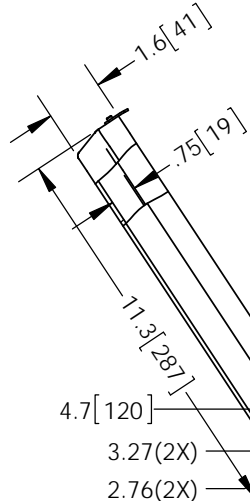


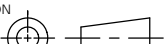

**NOTE:**

- 1- ENCLOSURE MATERIAL-GRAY (RAL7035) HOT MOLDED FIBERGLASS REINFORCED POLYESTER
- 2- SELF EXTINGUISHING AND HALOGEN FREE.
- 3- CABINETS ARE MAINTENANCE FREE AND CORROSION RESISTANT.
- 4- SHALL BE PACKAGED AS PER L-COM SPEC PKG-00070
- 5- ALL DIMENSIONS FOR REFERENCE ONLY

**REGULATORY COMPLIANCE:**

CE2011/65/EU(RoHS DIRECTIVE)



UNLESS OTHERWISE SPECIFIED, DIMENSIONS ARE IN INCHES [mm]  DIMENSIONAL TOLERANCES:  X = ±.1 [2.54] XX = ±.01 [.25] XXX = ±.005 [.13]  ANGULAR TOLERANCES:  ALL = ± 1°  PROJECTION 	APPROVALS		DATE		 45 BEECHWOOD DRIVE NORTH ANDOVER, MA 01845
	DRAWN BY B.PUCHASKI		01/30/14		
	CHECKED BY P.PESA		01/30/14		
	APPROVED BY P.PESA		01/30/14		CATEGORY  ENCLOSURE
CONFIGURATION DETAILS OF UNDIMENSIONED FEATURES MAY VARY		PRODUCT DESCRIPTION NEMA ENCLOSURE 12 X 10 X 5 WEATHERPROOF W/ DIN MOUNTING RAILS			
COLOR VARIATIONS MAY OCCUR		SIZE <b>A</b>	FSCM NO. <b>43321</b>	DWG. NO. <b>NB121005-000DR</b>	REV. <b>A</b>
		SCALE: NONE			CAD FILE: NB121005-000DR.SLDDRW
					SHEET 1 OF 1