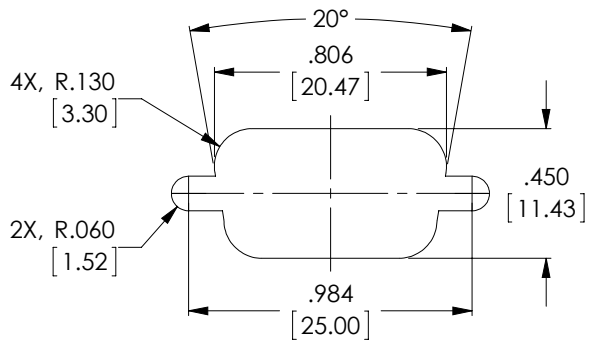


THE INFORMATION CONTAINED IN THIS DRAWING IS THE SOLE PROPERTY OF L-COM, INC. ANY REPRODUCTION IN PART OR WHOLE WITHOUT THE WRITTEN PERMISSION OF L-COM, INC. IS PROHIBITED.

RoHS Compliant ✓

REVISIONS			
REV	DESCRIPTION	DATE	APPROVED
A	INITIAL RELEASE	11/15/12	D.GRIFFIN



RECOMMENDED PANEL OPENING

**NOTE: SDG450XS JACKSCREWS AND SDHS HEX NUTS
ARE REQUIRED FOR PANEL MOUNTING
*PANEL THICKNESS MUST NOT EXCEED .062 [1.57]**

NOTES:

MATERIAL:

SHELL: STEEL
CONTACTS: COPPER ALLOY
INSULATOR: PBT FIBER REINFORCED (UL94V-0 RATED)

FINISH:

SHELL: TIN/NICKEL PLATED
CONTACTS: GOLD FLASH PLATED, 1-5μ INCHES

ELECTRICAL:

CURRENT RATING: 3 AMP
INSULATION RESISTANCE: 1000 MΩ MIN @500 VDC
DIELECTRIC WITHSTANDING VOLTAGE: 1000 VAC (FOR ONE MINUTE)

MISCELLANEOUS:

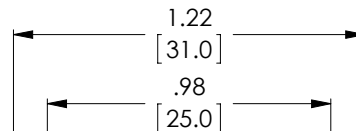
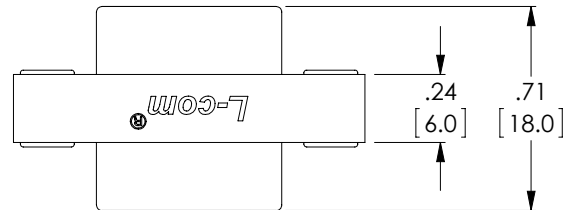
OPERATING TEMPERATURE RANGE: -55°C TO +105°C.
ALL CONTACTS WIRED STRAIGHT THROUGH.
COMPONENT SHALL BE TESTED FOR CONTINUITY.
ALL DIMENSIONS ARE FOR REFERENCE ONLY.

LABELING:

PANTONE 2945 BLUE. "L-COM" FONT MyriaMM ITALIC.
"GENDER CHANGER" FONT ARIAL BOLD, TEXT HEIGHTS; .085"
TEXT COLOR; WHITE.

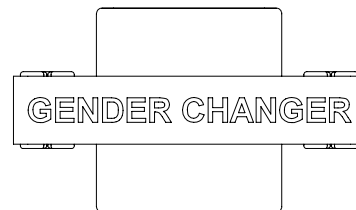
PACKAGING:

COMPONENT SHALL BE INDIVIDUALLY PACKAGED IN
ACCORDANCE WITH L-COM SPECIFICATION PS-0031.

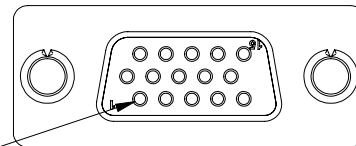


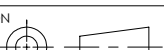

PIN 1

2X, 15 PIN FEMALE
HIGH DENSITY
D-SUB CONNECTOR



PIN 1



UNLESS OTHERWISE SPECIFIED, DIMENSIONS ARE IN INCHES [mm] OVERALL CABLE LENGTH TOLERANCE: ≤12 [305] = +1 [25] / -0 >12 [305] ≤60 [1524] = +2 [51] / -0 >60 [1524] ≤120 [3048] = +4 [102] / -0 >120 [3048] ≤300 [7620] = +6 [152] / -0 >300 [7620] = +3% / -0% ALL OTHER DIMENSIONAL TOLERANCES: .X = ±.2 .XX = ±.02 .XXX = ±.005 PROJECTION 	APPROVALS	DATE	 Global Connectivity 45 BEECHWOOD DRIVE NORTH ANDOVER, MA 01845		
	DRAWN BY D. DESJARDIN	11/2/12			
	CHECKED BY D. PARHAM	11/5/12	CATEGORY	D-SUBMINIATURE	
	APPROVED BY S. SMITH	11/15/12			
CONFIGURATION DETAILS OF UNDIMENSIONED FEATURES MAY VARY COLOR VARIATIONS MAY OCCUR	PRODUCT DESCRIPTION		ADPT, GNDR CHGR HD15 SLIM F/F NO HARDWARE		
	SIZE				
	FSCM NO.		DWG. NO. GCPH15F		
	A 43321				
SCALE: NONE		CAD FILE: GCPH15F.SLDDRW		REV. A	
SHEET 1 OF 1					