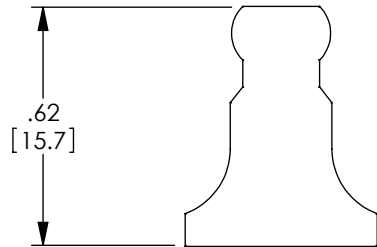
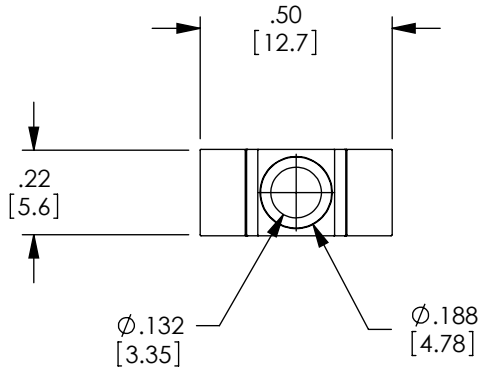


THE INFORMATION CONTAINED IN THIS DRAWING IS THE SOLE
PROPERTY OF L-COM, INC.. ANY REPRODUCTION IN PART OR WHOLE
WITHOUT THE WRITTEN PERMISSION OF L-COM, INC. IS PROHIBITED.

REVISIONS			
REV	DESCRIPTION	DATE	APPROVED
A	INITIAL RELEASE	10/25/10	D.GRIFFIN




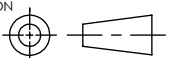
NOTES:

MATERIAL: THERMOPLASTIC
COLOR: BLACK

COMPONENT PACKAGED IN QUANTITY OF 10.

ALL DIMENSIONS ARE FOR REFERENCE ONLY.

RoHS Compliant ✓

UNLESS OTHERWISE SPECIFIED, DIMENSIONS ARE IN INCHES [mm] DIMENSIONAL TOLERANCES: .X = ±.1 .XX = ±.01 .XXX = ±.005 ANGULAR TOLERANCES: ALL = ± 1°	APPROVALS	DATE	 45 BEECHWOOD DRIVE NORTH ANDOVER, MA 01845				
	DRAWN BY D.FRISIELLO	10/20/10					
	CHECKED BY D.CASTRO	10/20/10	CATEGORY FIBER OPTIC				
	APPROVED BY D.GALLAGHER	10/20/10					
PROJECTION 	CONFIGURATION DETAILS OF UNDIMENSIONED FEATURES MAY VARY		PRODUCT DESCRIPTION DUST CAP FOR SC FIBER COUPLER				
			SIZE A	FSCM NO. 43321	DWG. NO. DSTCP-SC	REV. A	
			SCALE: NONE			CAD FILE: DSTCP-SC.SLDDRW	SHEET 1 OF 1