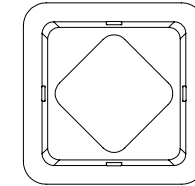
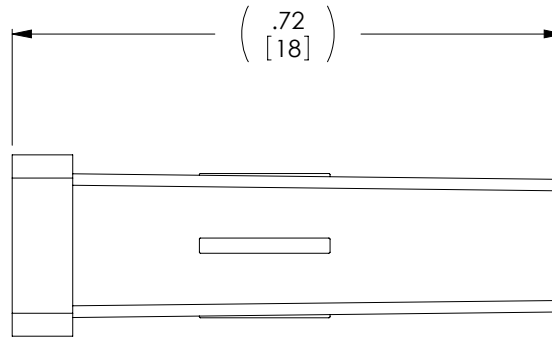
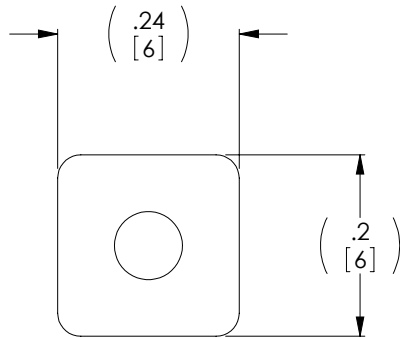



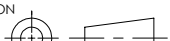
THE INFORMATION CONTAINED IN THIS DRAWING IS THE SOLE
PROPERTY OF L-COM, INC. ANY REPRODUCTION IN PART OR WHOLE
WITHOUT THE WRITTEN PERMISSION OF L-COM, INC. IS PROHIBITED.

REVISIONS			
REV	DESCRIPTION	DATE	APPROVED
A	RELEASED FOR PRODUCTION	07/15/10	DFP



NOTE:

1. MATERIAL: PVC, WHITE
2. DUST CAPS ARE PACKAGED 10 PIECES PER BAG
IN ACCORDANCE WITH L-COM SPECIFICATION PS-0031.

UNLESS OTHERWISE SPECIFIED, DIMENSIONS ARE IN INCHES [mm] OVERALL CABLE LENGTH TOLERANCE: ≤12 [305] = +1 [25] / -0 >12 [305] ≤60 [1524] = +2 [51] / -0 >60 [1524] ≤120 [3048] = +4 [102] / -0 >120 [3048] ≤300 [7620] = +6 [152] / -0 >300 [7620] = +3% / -0% ALL OTHER DIMENSIONAL TOLERANCES: .X = ±.2 .XX = ±.02 .XXX = ±.005	APPROVALS		DATE		 45 BEECHWOOD DRIVE NORTH ANDOVER, MA 01845	
	DRAWN BY D. PARHAM		07/14/2010			
	CHECKED BY D. CASTRO		07/14/2010			
	APPROVED BY S. SMITH		07/15/2010			
	CONFIGURATION DETAILS OF UNDIMENSIONED FEATURES MAY VARY		CATEGORY FIBER OPTICS			
	COLOR VARIATIONS MAY OCCUR		PRODUCT DESCRIPTION DUST CAP FIBER LC COUPLER			
			SIZE A	FSCM NO. 43321	DWG. NO. DSTCP-LC	REV. A
		SCALE: NONE		CAD FILE: DSTCP-LC.SLDDRW		SHEET 1 OF 1