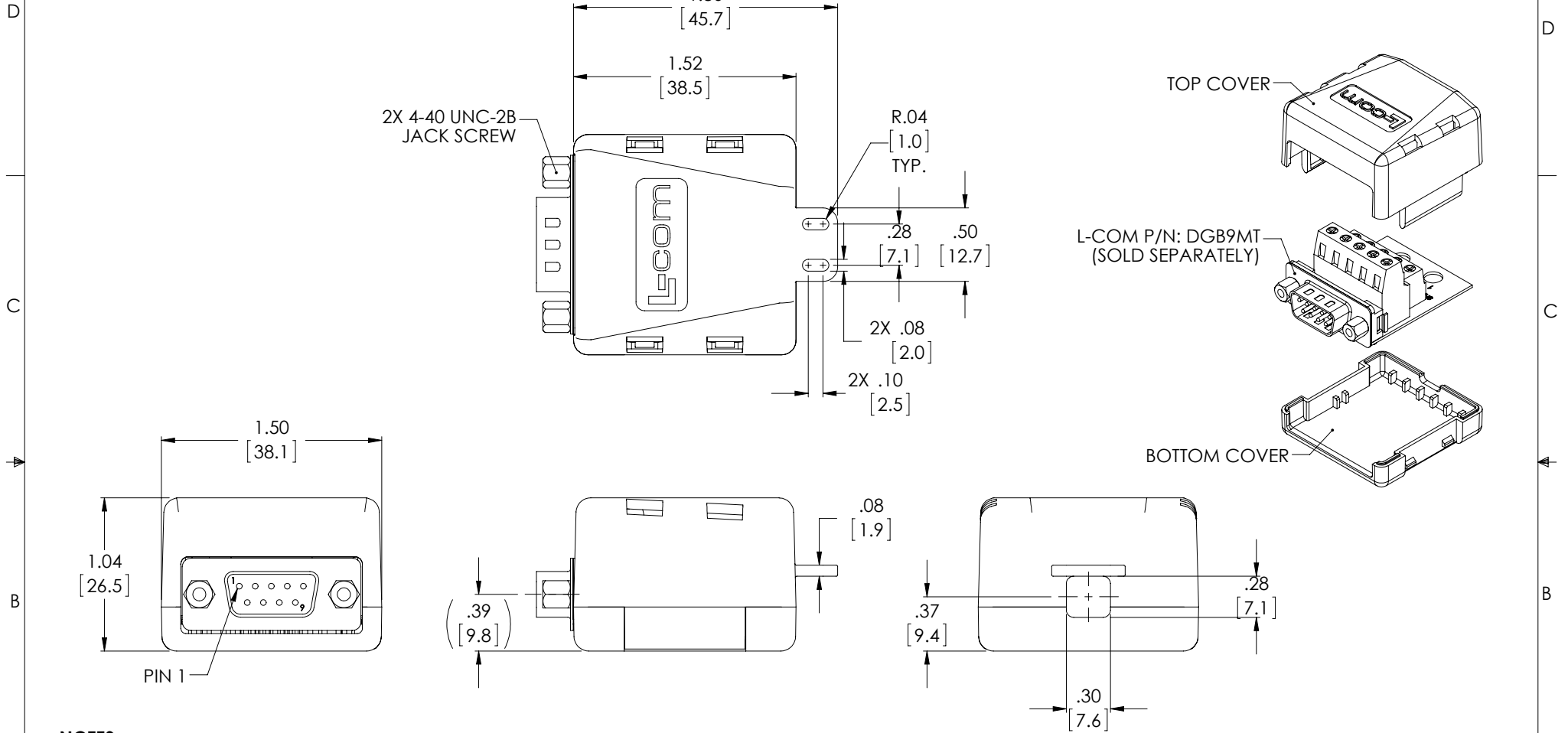


THE INFORMATION CONTAINED IN THIS DRAWING IS THE SOLE PROPERTY OF L-COM, INC. ANY REPRODUCTION IN PART OR WHOLE WITHOUT THE WRITTEN PERMISSION OF L-COM, INC. IS PROHIBITED.

REVIEWS			
REV	DESCRIPTION	DATE	APPROVED
A	INITIAL RELEASE	6/30/14	D.GRIFFIN



NOTES:

1. MATERIAL: ABS, BLACK, UL94V-0
2. WORKS WITH DB9 MALE CONNECTOR FOR FIELD TERMINATION
L-COM PN: DGB9MT1 (SOLD SEPARATELY).
3. TIE WRAP FOR CABLE INCLUDED.
4. COVER SHALL BE INDIVIDUALLY PACKAGED UNASSEMBLED
IN ACCORDANCE WITH L-COM SPECIFICATION PS-0031.

REGULATORY COMPLIANCE:
CE2011/65/EU(RoHS DIRECTIVE)

<p>UNLESS OTHERWISE SPECIFIED, DIMENSIONS ARE IN INCHES [mm]</p> <p>OVERALL CABLE LENGTH TOLERANCE: ≤12 [305] = +1 [25] / -0 >12 [305] ≤60 [1524] = +2 [51] / -0 >60 [1524] ≤120 [3048] = +4 [102] / -0 >120 [3048] ≤300 [7620] = +6 [152] / -0 >300 [7620] = +5% / -0%</p> <p>ALL OTHER DIMENSIONAL TOLERANCES: .X = ±.2 [5.08] .XX = ±.02 [5.1] .XXX = ±.005 [1.3]</p> <p>PROJECTION </p>	<p>APPROVALS</p> <p>DRAWN BY D. DESJARDIN</p> <p>CHECKED BY D. FRISIELLO</p> <p>APPROVED BY</p>	<p>DATE</p> <p>1/3/14</p> <p>5/6/14</p>	<p>L-com Global Connectivity</p> <p>45 BEECHWOOD DRIVE NORTH ANDOVER, MA 01845</p>	
	<p>CONFIGURATION DETAILS OF UNDIMENSIONED FEATURES MAY VARY</p>		<p>CATEGORY</p> <p>D-SUBMINIATURE</p>	
	<p>COLOR VARIATIONS MAY OCCUR</p>		<p>PRODUCT DESCRIPTION</p> <p>COVER FOR DGB9MT1</p>	
	<p>SIZE A</p>	<p>FSCM NO. 43321</p>	<p>DWG. NO. DGB9MT1-CVR</p>	<p>REV. A</p>
<p>SCALE: NONE</p>		<p>CAD FILE: DGB9MT1-CVR.SLDDRW</p>		<p>SHEET 1 OF 1</p>